

# Open Road West Norfolk 2023/2024 Prospectus

Open Road West Norfolk  
17, Rollesby Road, King's Lynn, Norfolk PE30 4LS  
Tel: 01553 776600 E-mail: [office@openroadtraining.co.uk](mailto:office@openroadtraining.co.uk)  
Website: [www.openroadtraining.co.uk](http://www.openroadtraining.co.uk)  
Patron: James Bagge  
Registered Charity: 1131445





***Training today's young people for tomorrow's technology***

## **Welcome to Open Road West Norfolk**

Open Road was first established in **September 2009** in response to a lack of alternative training facilities for disadvantaged, vulnerable and excluded young people.

We work with young people aged 14–16, who have experienced difficulties in school and mainstream education and older young people who are not in education, employment or training (NEET).

## **Training Provision at Open Road**

Our students come from a wide range of backgrounds and many have had a difficult experience of learning. Some of the young people we work with have special educational needs and disabilities (SEND).

With low trainer/student ratios, and a combination of theory and practical application, this alternative provision inspires those who learn in different ways. Students quickly engage with the programme and strive to achieve more as an individual, and develop team player skills by helping others.

Open Road drives a culture of hard work. A place where application, positive attitude and teamwork is acknowledged and appropriately rewarded, ultimately leading to professionally recognised qualifications that will help students find their way, secure employment and get themselves onto a career path that they can be proud of.

Each young person who attends Open Road has a personalised training programme and the opportunity to achieve an **IMI** (Institute of Motor Industry) or **Pearson BTEC** construction qualification.

Attendance is usually one day a week, but this is flexible depending upon the needs of the individual. We offer places to young people who typically fall into three groups: Those who have been excluded or who are at risk of exclusion from school, home educated young people and those who are at risk of becoming NEET. The project provides supported training with a focus on motor vehicle maintenance or construction and embedded within this practical experience is the opportunity for the young person to develop self-awareness, self-esteem and social skills to ensure they are well prepared for further studies or the job market.

## **Costs**

Our daily fee for young people to attend the centre is **£90** a day plus a one-off cost for PPE **£30** (Boots and Overalls) and registration and certification fees for qualifications. A sandwich lunch, fruit and drinks are provided to all our students and for those with a free school meal entitlement a separate charge of £3.00 is made to help contribute towards the cost of this provision.

## **Bursary Fund**

Applications to our bursary fund can be made by any individual for any of our activities and funding can be up to 100% of the cost. Each application is judged on merit and there needs to be an agreed outcome for each young person supported, for example a level 1 qualification or a period of successful work experience.

## **Bursary Fund Applications**

Applications will be accepted throughout the year and places awarded on a rolling basis. However, the majority of placements begin in September. To be considered for a placement we require a completed Bursary Fund Application and Consent form which can be found on our website under '**Forms**'.

## **Support for schools and their students.**

Schools receive statutory funding for their students, additional financial support for those with special educational needs and Pupil Premium for young people that are eligible for free school meals. We do not therefore intend to use the bursary fund for students referred to us by schools. However, we would consider supporting an individual in an exceptional circumstance if the bursary would be the difference between them being able to participate or not.

## **What's Going to be new in 2023**

In September 2022 we took delivery of our first Hybrid Electric training Vehicle and we expect another training vehicle in September 2023 to replace it

There is a serious shortage of EV trained technicians in the automotive industry and with a growing number of EVs on our roads, this represents a real opportunity for our young people to acquire skills that will be very much in demand. We hope to offer an IMI Level 1 Award in Electric/Hybrid Awareness during 2023/24.



West Norfolk

***Training today's young people for tomorrow's technology***

## **Who do we collaborate with?**

We work very closely with mainstream schools both locally and further afield, as well as the Alternative Provision schools. Open Road offers student places for those in Years 8 to 11.

We have also worked with a number of other local stakeholders including the Princes Trust, the College of West Anglia, the Matthews Project, On Track and Job Centre Plus.

We welcome the opportunity to work with other organisations to support young people living in West Norfolk and would encourage you to contact us via the website.

## **Qualifications**

### **IMI Level 1 Award in Automotive Maintenance**

#### **Who is this qualification for?**

These qualifications have been developed primarily for schools and colleges to deliver to Learners aged in the 14-16 age group, either on a full or part-time basis; however, they are also suitable for 16-19 Learners who wish to enter the automotive retail industry.

#### **About**

This qualification consists of a combination of units from:

- Health and Safety practices
- Foundation skills
- Automotive Maintenance

With such a variety of units, learners can get a real taste for developing their knowledge and skills onto further studies in their main area of interest.

#### **Entry requirements**

Learners taking the qualifications must be 14 years or over. There are no other formal entry requirements for the qualifications, and Learners are not expected to have any prior knowledge or experience.

#### **Progression**

The Award is ideal for those Learners who wish to undertake a qualification which provides a steppingstone to the IMI Level 1 Certificate in Automotive Maintenance.



## **IMI Level 1 Certificate in Automotive Maintenance**

### **Who is this qualification for?**

The Certificate is ideal for those Learners who wish to undertake a qualification which will support their progress to a Level 1 Diploma in Automotive Maintenance or a Level 2 qualification. It can also supplement their progress to GCSEs and other appropriate destinations.

### **About**

This qualification consists of a combination of units from:

- Health and Safety practices
- Foundation skills
- Automotive Maintenance

This Generic route for Automotive Maintenance allows learners to have the flexibility to develop their knowledge and skills across a variety of specialist areas to prepare them for further studies and potentially enter into a job role they desire.

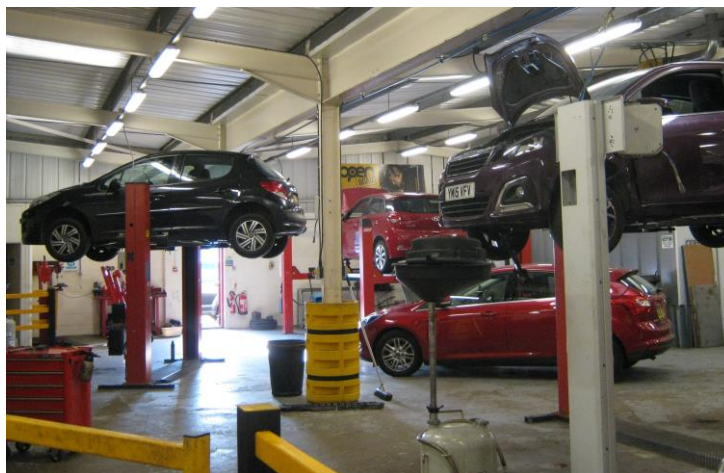
### **Entry requirements**

This is usually a follow-on qualification from the Level 1 Award in Automotive Maintenance and requires a further 200 learning hours for completion or a further 40 days study following the 14 days on the award.

### **Progression**

Completion of this Certificate Qualification will support the learner's progression into Foundation Learning (Level 1) or High (Level 2) Diploma. It can also supplement their progress to GCSEs and other appropriate destinations, such as apprenticeships and employment.





## **IMI Level 1 Diploma in Automotive Maintenance**

### **Who is this qualification for?**

The Diploma is ideally suited to 16-19-year-old Learners who enjoy the sector and wish to develop experience in a variety of automotive industry sectors, at a level suiting their ability. It will also support a Learner's progress to a Level 2 qualification or an Apprenticeship.

### **About**

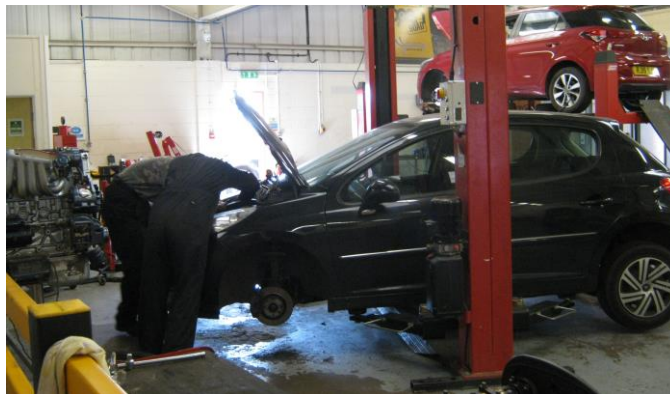
This qualification consists of a combination of units from:

- Health and Safety practices
- Foundation skills
- Automotive Maintenance
- Electrical
- Electrically Propelled Awareness

This Generic route for Automotive Maintenance allows learners to have the flexibility to develop their knowledge and skills across a variety of specialist areas to prepare them for further studies and potentially enter into a job role they desire.

### **Entry requirements**

This is usually a follow-on qualification from the Level 1 Certificate in Automotive Maintenance. And requires a further 75 learning hours or a further 15 days following the certificate course. A student who completed these three levels could achieve them in 70 days which is the equivalent of one day a week for two school years or two days a week for one school year.



## **IMI Level 2 Diploma in Vehicle Inspection**

### **Who is this qualification for?**

This knowledge and skills qualification (VRQ) is primarily designed to meet the needs of the young apprentice. It suits school & college students (and leavers) who wish to join the automotive industry.

### **About**

It provides learners with the opportunity to study both the theory and practical aspects of a range of routine vehicle inspection, fitting and maintenance procedures:

- Routine light vehicle maintenance, including engine systems.
- Inspecting, repairing and replacing light vehicle: standard and high-performance tyres.
- Carrying out light vehicle four-wheel alignment.
- Inspecting and replacing light vehicle: exhaust components, suspension dampers & springs, vehicle batteries and braking systems & components.
- Learners also gain a broad knowledge and understanding of health and safety in the workplace, agreeing customer vehicle needs and other skills associated with working in a garage.

This Generic route for Transport Maintenance allows learners to have the flexibility to develop their knowledge and skills across a variety of specialist areas to prepare them for further studies and potentially enter into a job role they desire.

## **Entry requirements**

This is usually a follow-on qualification from the Level 1 qualifications.

## **Progression**

This qualification offers the opportunity for progression onto:

- a full IMI SSC L2 Apprenticeship – or one of its component qualifications, e.g., a L2 Light Vehicle Technical Certificate
- a Vocational Competence Qualification (VCQ) for those who are employed.

## **Pearson BTEC**

The qualifications have been designed for pre-16 to 19+ learners who wish to achieve at Level 1 qualification in preparation for future study.

Pearson has developed the content of the new BTEC Introductory qualifications through consultation with further education representatives and other centres that deliver qualifications at this level. They designed qualifications with a focus on skills development rather than knowledge, therefore avoiding duplication of learning at a higher level and focusing on the broader skills that learners need for progression.

The purpose of these qualifications is to develop the transferable skills, attributes and behaviours needed for learners to progress to further study and ultimately to employment. The qualifications are designed to be delivered in an applied way, bringing together appropriate content with practical and technical skills.

As a Level 1 qualification the pass standard requires learners to complete routine, simple and directed tasks by applying their knowledge and skills. It is expected that learners' complete tasks fully under supervision, direction or with guidance.

At merit and distinction levels, learners may be expected to complete tasks in greater detail or with greater confidence or independence.



## **Transferable Skills**

The development of transferable and sector skills is the main focus. We intend for every learner to have the opportunity to develop key transferable skills through both core and sector units. This will help learners to appreciate how the transferable skills they develop in their core units can be contextualised in the sector they are studying. On completion of their course, learners will have developed a set of transferable and sector skills that will benefit them whatever their chosen progression route.

## **Communication**

- Writing, speaking and listening to others
- Using body language to help communication
- Using communication for different purposes
- Communicating in a variety of ways, including electronic and social media

## **Working with others**

- Setting common goals
- Showing respect for others in the team and valuing their contributions
- Listening to others in the team, being open minded
- Taking on roles and responsibilities

## **Problem solving**

- Identifying issues by being able to examine information
- Dealing with change
- Decision making to find solutions
- Staying with a problem until it is resolved
- Using IT to help solve problems

## **Managing information**

- Collecting and using information from different sources
- Determining relevance and accuracy of information
- Organising information and representing information in different ways
- Using IT to present and store information

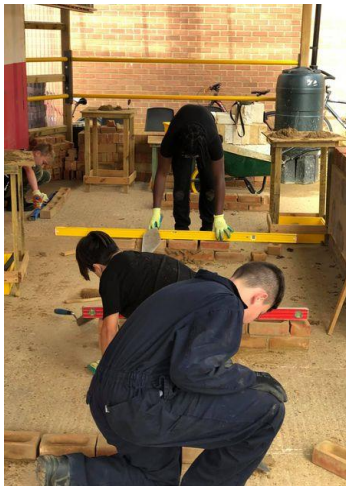


West Norfolk

***Training today's young people for tomorrow's technology***

## Self-management and development

- Setting goals and planning ahead
- Being proactive and flexible
- Being resilient and able to work under pressure
- Monitoring performance and devising strategies for improvement
- Using IT for time management



## Pearson BTEC Level 1 Introductory Award in Construction

Designed to be taken over one year, giving learners the opportunity to develop a range of skills in the construction sector and supporting progression on to further study. It could be a substantial vocational qualification within a study programme that includes other appropriate subjects such as English and maths.

### Who is this qualification for?

Designed for learners wishing to gain an introduction to a chosen vocation area. The Award offers the opportunity for learners to study a sector unit and plan for their next steps by completing the mandatory unit: Developing a Personal Progression Plan.

### About

For all regulated qualifications, Pearson specifies a total number of hours of study that it is expected learners will be required to undertake in order to complete the qualification: this is the Total Qualification Time (TQT). This is calculated for the average learner. Within TQT, Pearson identifies the number of Guided Learning Hours (GLH) that we expect a centre delivering the qualification to provide. Guided learning means activities, such as lessons, tutorials, supervised study and supervised assessments that directly involve tutors and assessors in teaching, supervising and invigilating learners. TQT includes other required learning such as private study, preparation for assessment and undertaking assessment when not directly under supervision.

Assessment -	Centre – devised assessment (internal Assessment)
Total Qualification Time -	75
Guided learning hours -	70
Grading information -	Units assessed using a grading scale of Distinction, Merit, Pass and Unclassified.

### Entry requirements

No prior knowledge, understanding, skills or qualifications are required before learners can register for this qualification.

### Progression

It can support their progress to a Pearson **BTEC Level 1 Award introductory Certificate in Construction** and also supplement their progress to GCSEs and other appropriate destinations, such as apprenticeships and employment.

# Pearson BTEC Level 1 Introductory Certificate in Construction

Qualification Number (QN)                      601/8543/0

## Who is this qualification for?

Designed for learners who may be ready to progress quickly to further study, the Certificate offers a basic introduction to the construction sector. It could form part of a study programme that includes other appropriate subjects such as English and maths.

## About

Assessment -	Centre-devised assessment (internal assessment)
Total Qualification Time -	195
Guided learning hours -	180
Grading Information -	Units are assessed using a grading scale of Distinction, Merit, Pass and Unclassified.

## Entry requirements

No prior knowledge, understanding, skills or qualifications are required before learners can register for this qualification.

## Progression

It can support their progress to a Pearson **BTEC Level 1 Introductory Diploma in Construction** and also supplement their progress to GCSEs and other appropriate destinations, such as apprenticeships and employment.

# Pearson BTEC Level 1 Introductory Diploma in Construction

Qualification Number (QN)                      601/8544/2

## Who is this qualification for?

Designed to be taken over one year, giving learners the opportunity to develop a range of skills in the construction sector and supporting progression on to further study. It could be a substantial vocational qualification within a study programme that includes other appropriate subjects such as English and maths.

## About

Assessment	Centre-devised assessment (internal assessment)
Total Qualification Time	390
Guided learning hours	360
Grading Information	Units are assessed using a grading scale of Distinction, Merit, Pass and Unclassified.

## Entry requirements

No prior knowledge, understanding, skills or qualifications are required before learners can register for this qualification.

## Progression

The qualification prepares learners for progression to Level 2 BTECs or other study programmes.





West Norfolk

*Training today's young people for tomorrow's technology*

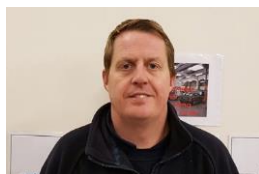
## Meet the Staff

There centre has a small staff team which is supplemented by sessional tutors and volunteers.

**Martin Slater- Managing Director**



**Robin Hansell – Training Centre Manager and Lead Mechanic Trainer**



**Byron Houston – Workshop Assistant**



**Sonia Cole Pastoral Support Officer**



**Ady Barney – Business Manager**



**James Bagge – Our Patron**



**Jo Pearson – Chair of Trustees**



**Terry Smith – Executive Trustee**

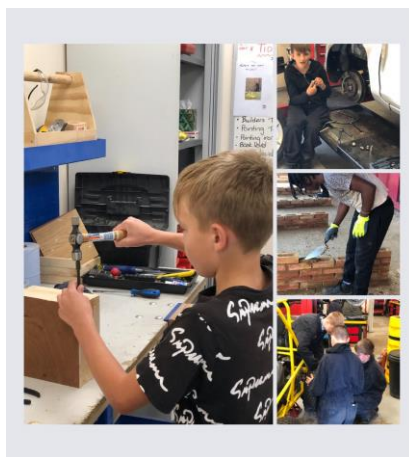
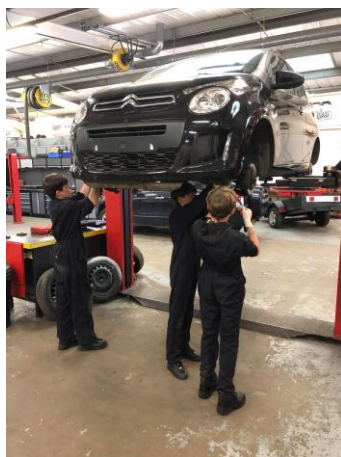
## Other Activities provided at Open Road

### *Summer Activities*

**August 2021** was the first time Open Road opened its doors for Workshop based activities in mechanics and construction.

In Summer 2023 we were open again for 8 days over the summer break.

Young people were able to attend and work on real cars and go-karts and make bird boxes, planters and tables. They were also able to learn basic bicycle maintenance



Application forms available from the website or direct from [office@openroadtraining.co.uk](mailto:office@openroadtraining.co.uk)

### **Case Study – One of our successes**

Each young person is provided with an individual learning plan and their progress is monitored throughout their time with us. We ask for their feedback during the year and conclude with a finishing questionnaire. Their views, opinions and suggestions are implemented where practicable and we gauge our organisational success on the number of young people achieving qualifications.

‘EW came to Open Road West Norfolk through Sheridan School. He was initially a hard one to crack in that he often only made it into the centre for half a day at a time, he ended up doing two full days a week with us and went on to achieve his Pearson BTEC Introductory Award in Construction with a distinction.’



*West Norfolk*

***Training today's young people for tomorrow's technology***

***How to contact us***

**By phone on 01553 776600**

**By e-mail at [office@openroadtraining.co.uk](mailto:office@openroadtraining.co.uk)**

**Or via our website [www.openroadtraining.co.uk](http://www.openroadtraining.co.uk)**